

## **Kathleen Janet (Larsen) Willemsen**

*Delavan, Wisconsin*

Kathleen's Great Great Grandfather is:

### **Private Edward Mitchell**

*Company B 47<sup>th</sup> Regiment Wisconsin Infantry*

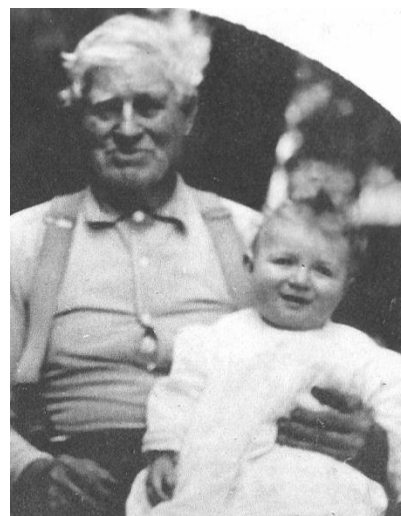
Edward Mitchell was born on 26 March 1836, in Hull, Yorkshire, England, to William Mitchell (1811-1893) and Christianna (or Hannah) Chanley. Edward was united in marriage to Sarah Burton (1841-1922) in Yorkshire, England (date unknown). Edward and Sarah came to America sometime in 1861, settling in the Village of East Troy area where he secured first 50 acres and through the years he procured 100 more acres. This pioneer farm has remained in the family through four generations with a great granddaughter and her husband still living on the property.

Edward and Sarah had only been in the United States for 4 years when he answered a call by President Lincoln on December 19, 1864 for 300,000 soldiers, with the amount of 17,805 soldiers to come from Wisconsin. The 47<sup>th</sup> regiment was recruited and organized under the superintendence of Colonel George C. Ginty, of Oconto, for a 1-year enlistment. They left Camp Randall, Madison, on the 27<sup>th</sup> of February 1865, under orders to report at Louisville, Kentucky, where they arrived on the 28<sup>th</sup>. Early in March they proceeded by rail from Louisville to Nashville, TN, and then to Tullahoma, TN, at the junction of the McMinnville & Manchester, with the Nashville & Chattanooga railroad. Here the regiment was employed in guard duty until the latter part of August at the war's end when they returned to Nashville, at which place the 47<sup>th</sup> was mustered out, on the 4<sup>th</sup> of September. They arrived on the 8<sup>th</sup> of September 1865, at Madison, WI, where they were paid and disbanded.

Edward and Sarah had six children. The couple was a well-known and highly respected farm family in Walworth County. Edward lived to age 93, dying in the then Village of East Troy on 12 Jan 1929, and he is buried at Oak Ridge Cemetery in East Troy. There is a GAR marker at Edward and Sarah's gravesite.



Oak Hill Cemetery, East Troy, WI



About 1898-Edward Mitchell with Oliver Mitchell (my maternal grandfather)